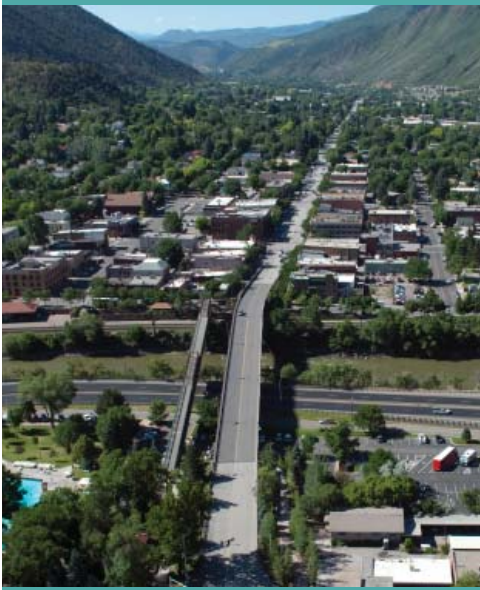


SH 82 Grand Avenue Bridge



The Colorado Department of Transportation invites you to participate in the SH 82 Grand Avenue Bridge Visioning Workshop

Wednesday, December 7,
and Thursday, December 8
at the

Glenwood Springs Community Center

100 Wulfsohn Road, Glenwood Springs
1:00 p.m. to 4:30 p.m., December 7, 2011
8:30 a.m. to Noon, December 8, 2011

Dear SH 82 Grand Avenue Bridge Stakeholder:

We need your time and your input! You are personally invited to the SH 82 Grand Avenue Bridge Visioning Workshop. You were identified as a citizen, official, and/or business owner who has demonstrated interest in the Grand Avenue Bridge project. Please commit to this workshop so that your values and points of view are considered in the vision for the future of the bridge. This exercise is intended to clarify the context for the bridge, explore the community and stakeholder values that will shape the plans for the future bridge, and document the principles and desired outcomes that will be considered as the project moves forward.

Visioning Overview:

The SH 82 Grand Avenue Bridge Vision will be developed by you and other stakeholders working side-by-side for two half-day sessions to discover common goals and define what is important about the design and construction of the future bridge. Project planners and designers will use your defined values to complete a project that provides safety and mobility, and that protects the environment, character, and vitality of Glenwood Springs.

At the visioning workshop, we will develop a consensus around what must be protected through this project and what must be enhanced. We will not choose an alternative or identify a particular design; rather, we will develop and document concepts and a project vision that will guide the development of the project through the current Environmental Assessment study.

For more information on the SH 82 Grand Avenue Bridge project, please visit www.sh82grandavenuebridge.com.

SH 82 Grand Avenue Bridge Visioning Workshop Agenda

Wednesday, Dec. 7

1:00 p.m. to 4:30 p.m.

Define the context of the Grand Avenue Bridge through your experience. Discuss the regional and local trends that will affect the future Bridge.

Thursday, Dec. 8

8:30 a.m. to Noon

Discuss what is important to you to include in the design and construction of the Grand Avenue Bridge. Develop a vision for the project.

Invitations and Participants

The organizations invited to participate are listed in the table below.

| Organizations Invited to Workshop | | |
|--|---------------------------------------|---|
| Bader Floral | Glenwood River Commission | Summit Canyon |
| Blue Sky Adventures | Glenwood Springs Chamber | Mountaineering |
| BMS Enterprises, Building Owner | Glenwood Springs City Council | Tourism Commission |
| Canyon Bikes | Glenwood Springs | Town of Carbondale Town Council |
| CLEER and Garfield Clean Energy | Downtown Market | Town of New Castle |
| Colorado Division of Parks and Wildlife | Glenwood Springs Fire Department | Treadz |
| Colorado State Patrol | Glenwood Springs Police Department | Trout Unlimited |
| Fins Grille | Glenwood Transportation Commission | Villa Flora LLC |
| Garfield County Board of County Commissioners | Hotel Colorado | Roaring Fork School District RE-1 |
| Garfield County Library Board | Italian Underground | Roaring Fork Transportation Authority (RFTA) |
| Gear Exchange | Middle Colorado River Watershed | Rock Garden Rafting |
| Glenwood Caverns | One Love | Springs Liquors |
| Glenwood Springs | Pattillo and Associates | White River National Forest |
| Downtown Development Authority (DDA) | Peppo Ni | Whitewater Rafting |
| Glenwood Downtown Partners | Post Independent | Private Citizens |
| Glenwood Springs Historic Preservation Commission | Riviera Supper Club | Project Leadership Team (PLT) |
| Glenwood Parks and Recreation | Roaring Fork Anglers | Project Working Group (PWG) |
| Glenwood Planning & Zoning Commission | Roaring Fork Conservancy | Consultant Team |

The list of people who participated in the Workshop are listed below.

| Final List of Participants | | |
|-----------------------------------|----------------------------|--------------------------------|
| Community Members | PLT and PWG Members | Consultant Team Members |
| John Bernes | Joe Elsen | Craig Gaskill |
| John Hoffmann | Josh Cullen | Jim Clarke |
| Gregory Durrett | Roland Wagner | George Tsiouvaras |
| Cathy Tuttle | Art Gurule | Mary Speck |
| Dan Chaco | Shelly Kaup | Jeff Simmons |
| Thane Lincicome | Leslie Bethel | David Woolfall |
| Jodie Collins | Kjell Mitchell | Don Connors |
| Jim Mason | Sean Yeates | Pat Noyes |
| Bob Andre | Dave Betley | Tom Newland |
| Steve Beckley | | |
| Bill Coleman | | |
| Judy Gillespie | | |
| Michael Blair | | |
| Jeremy Heiman | | |
| Suzanne Stewart | | |
| Michael Gamba | | |
| Jan Harr | | |
| Gary Tillotson | | |
| Terry Wilson | | |
| Dave Alcott | | |
| Larry Welch | | |
| Bob Pattillo | | |
| Dave Sturges | | |
| David Hauter | | |
| Ted Edmonds | | |
| Carl Moak | | |
| Erin Zalinski | | |

Visioning Workshop Agenda

Wednesday, December 7, 1:00-4:30pm

- Opening remarks and self introductions
- Outcomes and ground rules for visioning workshop
- Review timeline
- Break and reassemble in small groups
- Discuss global, regional and local trends as they affect transportation
 - Economic and Business Trends
 - Social and Community Trends
 - Environmental Trends
 - Tourism Trends
- Break and reassemble in large group
- Report out on trends
- Review draft context statement, draft critical success factors and scoping
- Preparation for tomorrow and adjourn

Thursday, December 8, 8:30-noon

- Review of yesterday
- What we treasure/ what we want to leave behind
- Break and reassemble in small groups
- Discuss scenarios
 - Rehabilitation
 - Replacement
 - Managing construction
- Break
- Finding common ground
- Wrap up

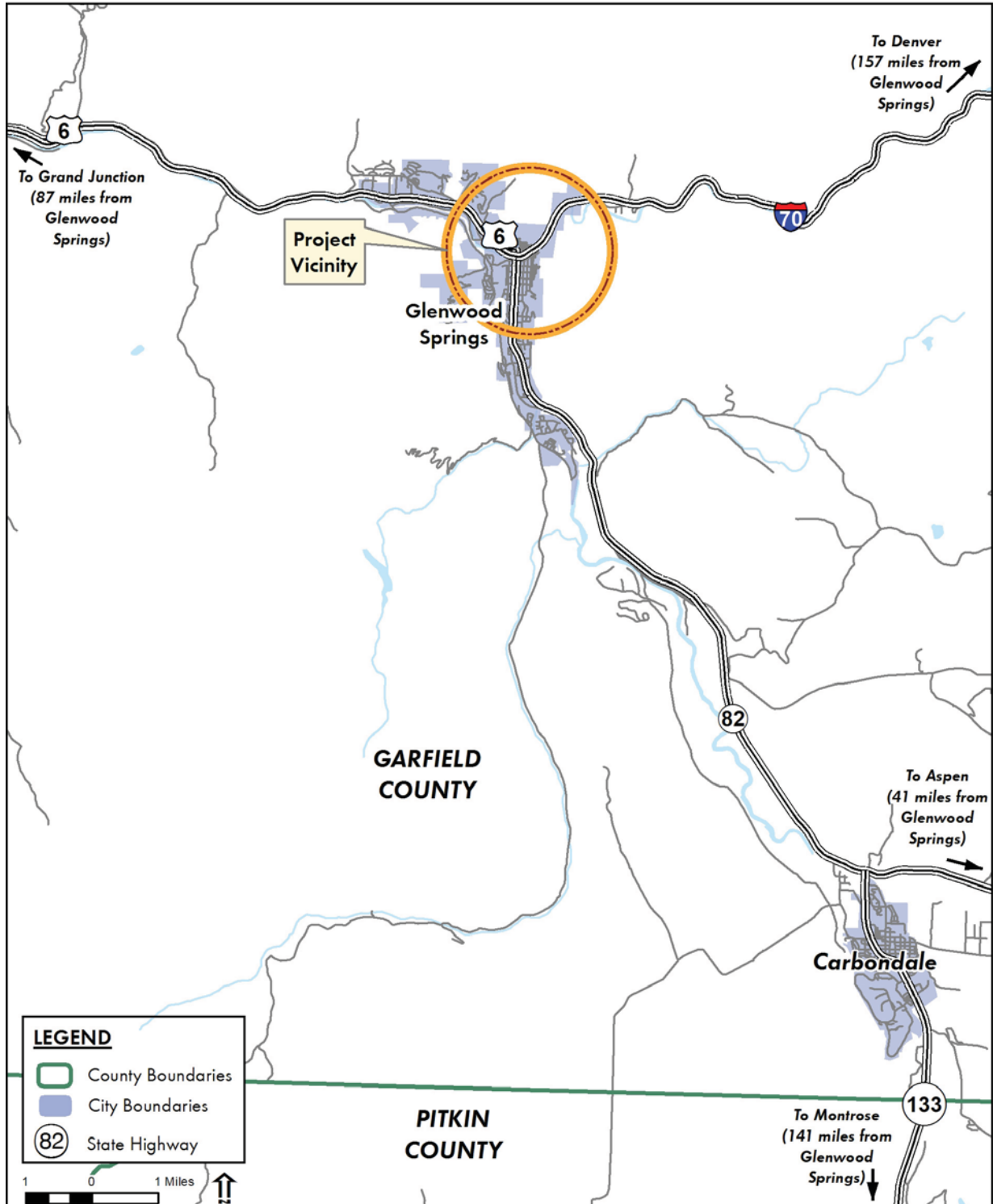
Outcomes

- Clarify the context for the study
- Explore community and stakeholder values
- Define what is important about the future bridge
- Develop consensus around what should be protected and enhanced

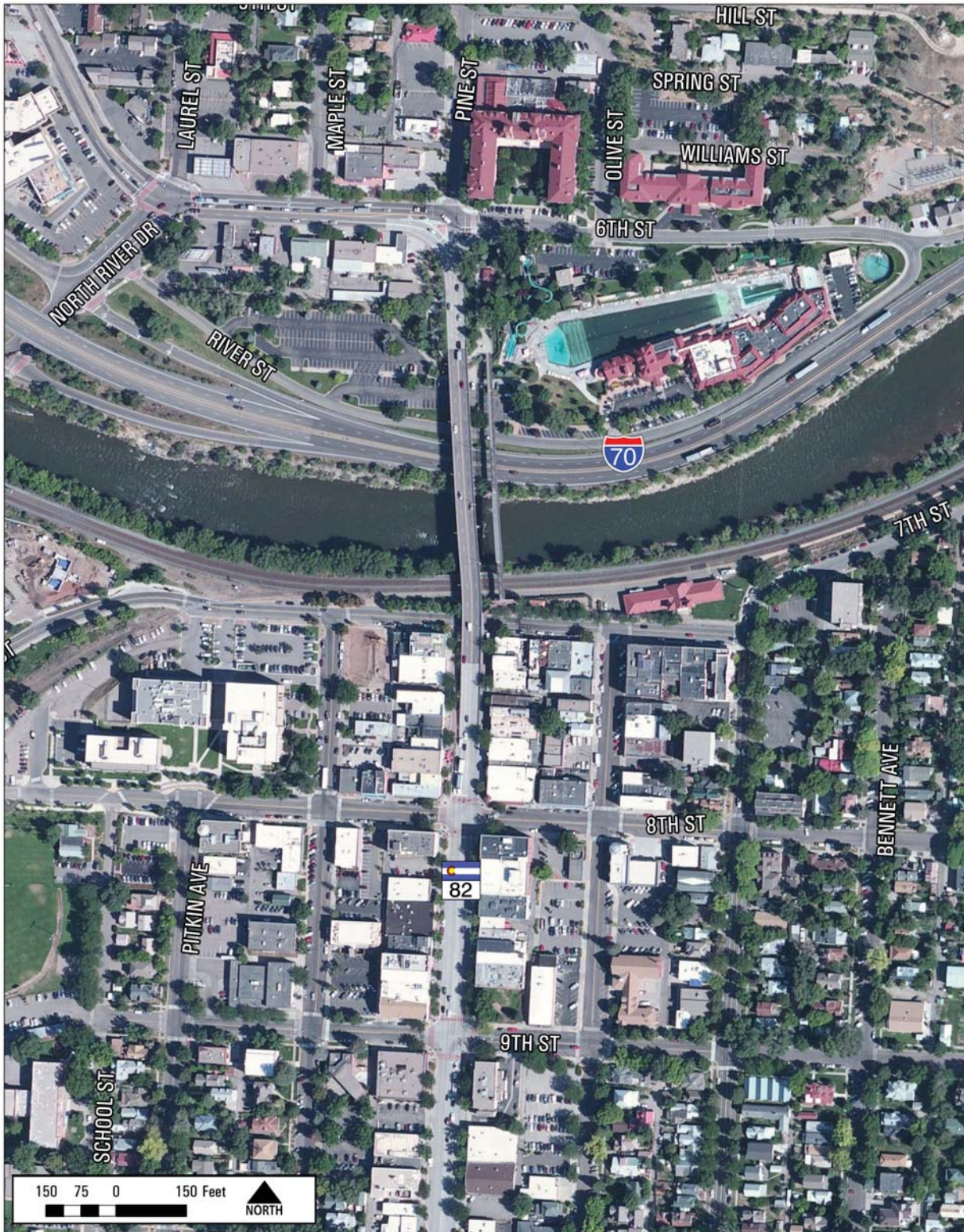
Ground Rules

- Focus on the future – where we want to go
- Focus on sharing, learning, understanding, and finding common ground – not on problem-solving
- Every idea and comment is valid – participants need not agree
- Flip charts will be used to create a community record
- Workshop structure is task-oriented – stick to activity and time frames
- Facilitators will structure time and tasks
- Avoid lecturing and focusing on self-interests or personal agendas
- Maintain an attitude of playfulness

Regional Map



Vicinity Map



DRAFT Context Statement

The Grand Avenue bridge over the Colorado River, Interstate 70 and the railroad tracks, connects north and south Glenwood Springs, I-70 and State Highway 82, and the historic districts of downtown and the Glenwood Hot Springs.

The bridge stands as a gateway to the city of Glenwood Springs, Glenwood Canyon, the Roaring Fork Valley, and Colorado's western slope communities. It serves local, regional and state travel, local commuters, emergency response, bicyclists and pedestrians.

The soaring walls of Glenwood Canyon; the rich history of Glenwood Springs, built at the confluence of the Colorado and Roaring Fork Rivers; mining; tourism and recreation define a splendid and vivid context for the Grand Avenue bridge.



DRAFT Critical Success Factors

- Meet current design standards
- Safety
- Pedestrian, bicycle, and ADA access
- Iconic structure
- Promote appropriate speeds
- Connection to 6th Street
- Minimize construction impacts
- Solve problems into the future
- Provide for activities and vibrant street life under the bridge
- Avoid and minimize environmental impacts
- Accommodate traffic flow and demand



DRAFT Critical Success Factors (continued)

- Design for sustainability
- Looks like it grew out of the history of Glenwood Springs
- Positive economic impact, short and long-term
- Invigorates activity on Wing Street
- Accommodates traffic flow on I-70
- Maintain and enhance recreation on the river
- Affordable
- Doesn't impact aquifer and hot springs
- Source of community pride
- Engaged public and community



Replacement



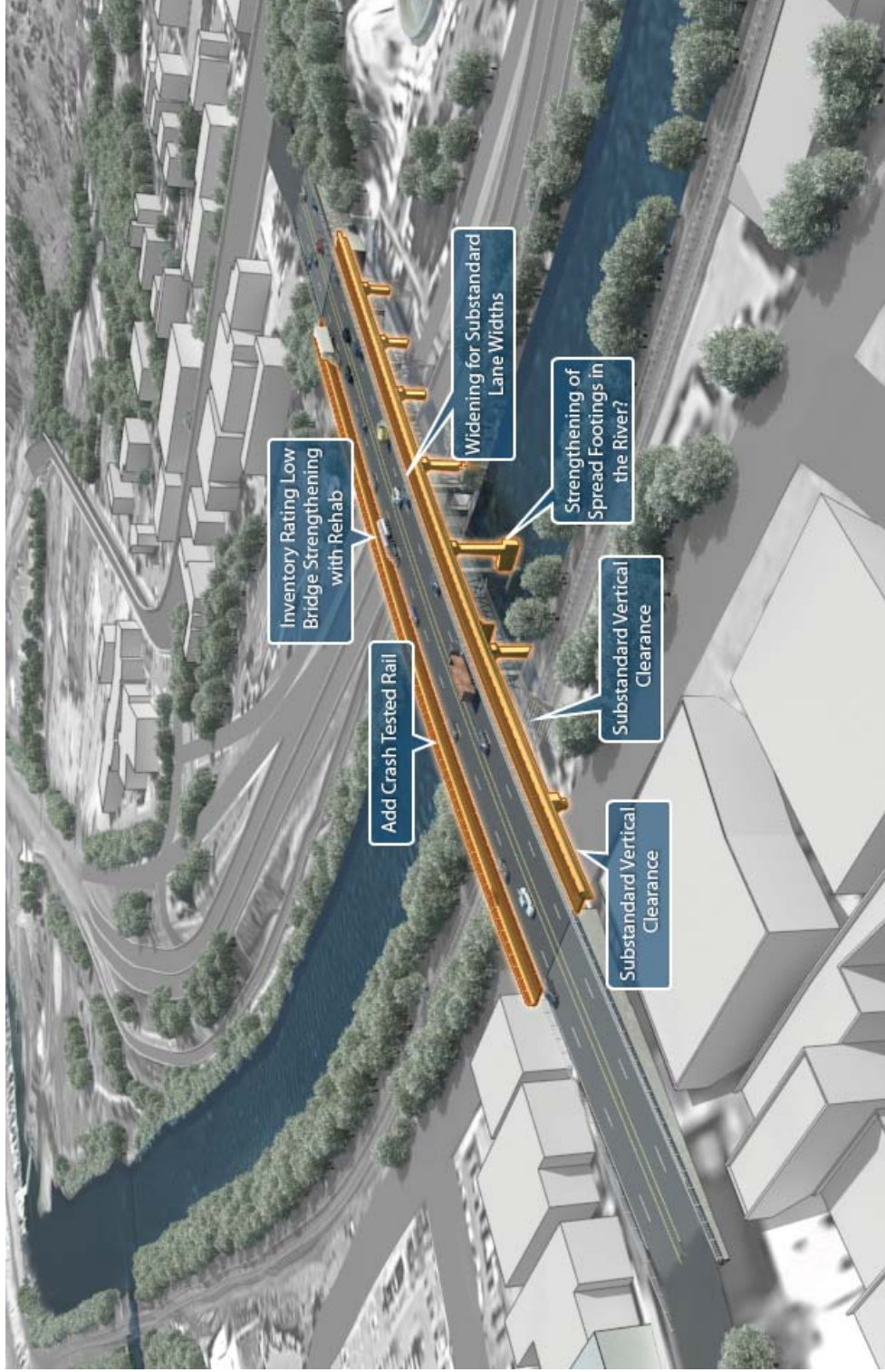
Managing Construction



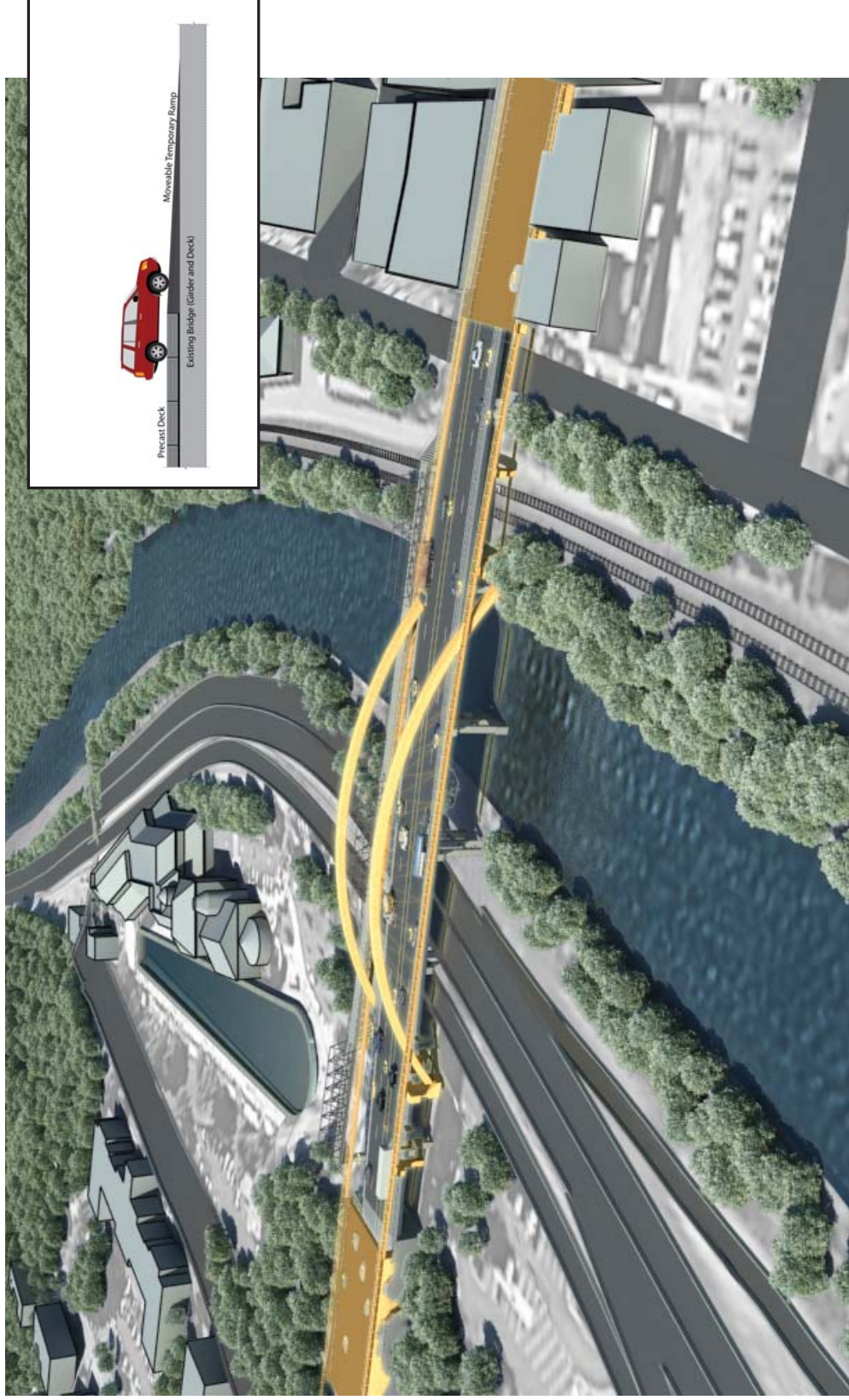
Replacement



Rehabilitation



Managing Construction



SH 82 Grand Avenue Bridge Visioning Workshop

Global, Regional and Local Trends

Economic and Business Trends

40 minutes

Select a recorder, timekeeper, and presenter for each group.

Use the flip charts to capture the trends.

Use these questions to stimulate conversation:

- What are the current and emerging global, regional and local trends in business, technology, and the economy?
- How might these trends impact transportation in Glenwood Springs and the Grand Avenue bridge?

Example Trend:

- Oil and gas industry on the western slope has changed commuter patterns.

SH 82 Grand Avenue Bridge Visioning Workshop

Global, Regional and Local Trends

Social and Community Trends

40 minutes

Select a recorder, timekeeper, and presenter for each group. Use the flip charts to capture the trends. Use the questions to stimulate conversation.

- What are the current global, regional and local trends in demographics, land use patterns, development, and social issues?
- How might these trends impact transportation in Glenwood Springs and the Grand Avenue bridge?

Example Trend:

- Geographic distribution of employee housing

SH 82 Grand Avenue Bridge Visioning Workshop

Global, Regional and Local Trends

Environmental Trends

40 minutes

Select a recorder, timekeeper, and presenter for each group. Use the flip charts to capture the trends. Use the questions to stimulate conversation.

- What are the emerging global, state, and local environmental trends?
- How might these trends impact transportation in Glenwood Springs and the Grand Avenue bridge?

Example Trend:

- Increasing interest in alternative fuels in transportation

SH 82 Grand Avenue Bridge Visioning Workshop

Global, Regional and Local Trends

Tourism Trends

40 minutes

Select a recorder, timekeeper, and presenter for each group. Use the flip charts to capture the trends. Use the questions to stimulate conversation.

- What are the emerging global, state, and local tourism trends?
- How might these trends impact transportation in Glenwood Springs and the Grand Avenue bridge?

Example Trend:

- Changing European economy and tourist market

SH 82 Grand Avenue Bridge Visioning Workshop

Scenarios

The purpose of the exercise is NOT to select a preferred scenario; rather, it is to test various ideas and concepts to learn what opportunities and benefits each option might offer.

You will have 20 minutes at each station to discuss the scenarios.

Capture the answers to these questions on the flip charts provided. Consider the following:

- What are the advantages of the different elements in the scenario?
- What do you like about these scenarios and why?
- If you have concerns with a scenario, what would need to happen to make the scenario a viable future?
- Consider construction timing and impacts – what advantages and disadvantages do you see in the different options?

We are testing concepts and elements to help identify what is most important to the community, and what values should be captured and provided as guidance to the planners and engineers.

Focus on values not physical characteristics – keep asking why, what is important about that?

Overview

The flip charts used to record participants' input are included here in the order they were created during the workshop:

Things We Love About Glenwood and the Bridge

Historic Context

Economic and Business Trends

Social and Community Trends

Environmental Trends

Tourism Trends

Summary of Key Trends

What We Want to Keep - Treasures

What We Want to Leave Behind

Scenario: Rehabilitation

Scenario: Replacement

Scenario: Managing Construction

Key Project Objectives

Things We Love About Glenwood and the Bridge

- ▶ Historic integrity of downtown
- ▶ Glenwood Hot Springs Pool
- ▶ How do we get the 'answer'?
- ▶ Traffic flow
- ▶ Infrastructure
- ▶ Safety
- ▶ 8th and Grand
- ▶ Vitality of Glenwood
- ▶ 700 block of Grand Avenue
- ▶ Community
- ▶ Downtown core character
- ▶ Walking downtown
- ▶ The process
- ▶ The pedestrian/vehicle environment on 7th
- ▶ The River as it goes through town
- ▶ Historic charm
- ▶ Vitality
- ▶ Fun, historic environment
- ▶ Economic vitality
- ▶ River experience
- ▶ Bike and pedestrian
- ▶ Retail on 7th Street changes
- ▶ Historic integrity
- ▶ Walkability
- ▶ Iconic bridge
- ▶ Historic context
- ▶ Springs
- ▶ Access
- ▶ Community
- ▶ Downtown
- ▶ Flourishing town
- ▶ Natural beauty
- ▶ Hotel Colorado

Historic Context

- ▶ Look at great bridges around the world
- ▶ Bridge ties both sides of river together and ties river to community
- ▶ Downtown design standards (City Planning & Zoning) need to be incorporated
- ▶ What were the reasons to interface the bridge and Exit 114? Would be good to know
- ▶ Take history, compare traffic, project traffic and make bridge compatible with future traffic
- ▶ Pedestrian bridge is nice because it is separate from vehicle bridge
- ▶ Be mindful of color and texture
- ▶ Railroad crossing: at-grade? Probably not
- ▶ Can pedestrian use be incorporated into new bridge?
- ▶ Also look at the great bridges of the world, not just locally
- ▶ The bridge gets people interfacing with the river (wave at rafters)
- ▶ Foot traffic across bridge
- ▶ Rosenberg design – incorporate into bridge
- ▶ Pedestrian tunnel under railroad from 7th Street at Grand Avenue
- ▶ Interest in photos of original footbridge across river (of historical context)
- ▶ Bridge could be new that fits with historical context
- ▶ Consider how historic bridge related to adjacent buildings
- ▶ Consider historic Grand Avenue as tree-lined street
- ▶ Consider “peachblow” sandstone used for historical buildings
- ▶ Existing pedestrian bridge has created space for people
- ▶ Be mindful of materials and color use of area under bridge for other public uses

Economic and Business Trends

Local Trends:

- ▶ Glenwood Meadows is growing
- ▶ Multiple retail centers throughout town – changes local traffic patterns
- ▶ Increased airline traffic up valley has reduce traffic through Glenwood
- ▶ Reduced construction traffic (at least short term) – Regional

Regional

- ▶ Retail leakage to Rifle/Gypsum/etc. – Regional
- ▶ Increased tourist traffic from front range
- ▶ More locally owned independent businesses
- ▶ Tourists prefer to walk through town
- ▶ Increased internet shopping, reduces local retail (global)
- ▶ Increased cost of business (local/regional/global)
- ▶ Changing competition for employee (local/regional/global)
- ▶ Tourist enjoy historic character of downtown
- ▶ More activities/recreational
- ▶ Increased downtown focus
- ▶ Reduction in construction industry overall
- ▶ Reduction in local population

Regional

- ▶ Oil and gas
- ▶ Down Valley population relocation

Impacts to Traffic:

- ▶ Flat to slightly reduce vehicle traffic today. But will increase in future
- ▶ Increased pedestrian/bike traffic

How these Trends Impact Transportation

- ▶ Sustainability – the next trend? Needs to be incorporated in bridge
- ▶ Internet – will lessen traffic detracts use might not be net decrease read outs for traffic flow
- ▶ Urbanization – attractive asset; influence increase in pedestrian use planning the context of Glenwood for generations not just moving traffic – a community attraction
- ▶ Use of public transportation – less cars, bridge needs to accommodate this somehow
- ▶ Entrepreneurship: keep bridge with its setting equals room to grow businesses; must preserve 7th street
- ▶ An iconic bridge will address many of these trends
- ▶ Bridge is not just Glenwood's – it's a state thing

Economic and Business Trends (cont.)

- ▶ Aging population – ADA access; easy to move on mindful of walkers
- ▶ Global economy
- ▶ 29,000 residents by 2050 – this will keep pressure on bridge and transportation on the whole
- ▶ Deteriorating infrastructure; improving the bridge attract people; business prosperity
- ▶ More people from front range and beyond
- ▶ Develop up valley – will induce traffic over the bridge
- ▶ Increase in homeless population around bridges

Social and Community Trends

- ▶ Internet: transport communication anywhere in world. Lessons travel, shopping
- ▶ Urbanization – moving to centers or hubs
- ▶ Use of public transportation
- ▶ Aging population
- ▶ Increased use in trucks for transport
- ▶ Population diversity
- ▶ Building more public places
- ▶ Social isolation
- ▶ People staying single longer
- ▶ Demographics and community trends
- ▶ Urbanization : problems equal financing (mixed use) and noise
- ▶ Multi-generational opportunities equals programs, facilities
- ▶ Kids go everywhere with family
- ▶ Walkability (linked to urbanization)
- ▶ Entrepreneurship equals more opportunity (more of necessity) not working for a company, creating one
- ▶ Legal marijuana – impacts illegal use
- ▶ Youth behavior – open school enrollment has created transit students equals more cars!
- ▶ Libraries used as community places – kids go to study after school; outdoor “plazas” to use free wi-fi – social
- ▶ Enabling auto use via bigger/more parking areas
- ▶ School budgets cutting bus transit equals more cars.
- ▶ What are the economic development trends?
- ▶ Good place to come to with businesses but not necessary companies
- ▶ Attract businesses, develop infrastructure
- ▶ Glenwood tourist attraction – is it growing?
- ▶ Commercial business is being decentralized away from Glenwood.
- ▶ Agriculture – mining – businesses – tourism – ? oil and gas. Sustainability next.

Environmental Trends

Regional

- ▶ Dark sky consciousness
- ▶ Natural gas development – (Dale; Rifle)
- ▶ BRT
- ▶ Trail System – Increased human-powered transportation
- ▶ Glenwood downtown: hub for multi-modal transportation.
- ▶ Trend: increased rail?
- ▶ Fixed guideway Denver – Eagle
- ▶ Gasoline price increase. Drive transit growth
- ▶ Pine beetle impacts: logging; biomass energy
- ▶ FHWA: sustainable development
- ▶ Geothermal Potential: ice melt, dist. heating
- ▶ Use drought - tolerant/native plantings - to reduce water use
- ▶ Stormwater quality = river quality
- ▶ Improve river and riparian environment
- ▶ Trend: Improved recreational opportunities
- ▶ Renewable Energy: costs going down and efficiency going up.
- ▶ Intelligent transportation systems
- ▶ Green buildings materials
- ▶ Urbanization - new urbanism, efficient land use, noise mitigation

How these trends impact transportation

- ▶ Bridge provides opportunities for BRT, Multi-Modal, Bike/Pedestrian, Rail
- ▶ Enhancing recreational opportunities through design
- ▶ South Bridge (No Pilings) and its effects on Grand Ave traffic
- ▶ Accommodations (or not) increased traffic due to logging and gas development
- ▶ Increased safety, on bridge and for river users
- ▶ Lowering maintenance, reducing green house gases (GHG's)
- ▶ Accommodating increased traffic in general
- ▶ Accommodating increased rail demand under bridge
- ▶ Reduced idling and related pollution
- ▶ Reduced noise and light pollution (materials and design)
 - Enhanced aesthetics, too
- ▶ Geothermal snowmelt
- ▶ Better access to river
- ▶ Opportunity to design a pigeon-proof bridge.

Tourism Trends

- ▶ Global currency up and down issues equals?
- ▶ State people are staying closer to home!!
- ▶ Higher priority than global
- ▶ Majority of tourism comes from Front Range (Colorado Springs/FTC.)
- ▶ Summer time market competes with other “winter” locations/tourist areas that are developing summer activities

Local/Regional

- ▶ Glenwood Springs occupancy rate is up equals overflow
- ▶ Glenwood Springs mid-market choice
- ▶ Up traffic in winter
- ▶ Traffic experience degradation getting back to Front Range
- ▶ Bike/Pedestrian path development up
- ▶ Market equals “memories and history experience”
- ▶ Bike/Pedestrian usage
- ▶ Bridges are becoming multi-purpose
- ▶ Technology elements incorporate artistic elements/characters
- ▶ Improved RFTA service
- ▶ Transportation Issues:
 - ▶ Getting here
 - ▶ Getting home
 - ▶ Moving about town
 - ▶ Hear/audio levels
 - ▶ Crossing streets

Transportation Impacts

- ▶ Congestion up
- ▶ Bridge demands up
- ▶ Need well designed pedestrian component
- ▶ Needs to address “ADA” type design for ALL to use expand that type of experience

Summary of Key Trends

- ▶ Urbanization/built environment
- ▶ Iconic bridge/bikes
- ▶ Integrated transportation
 - System – river, bike, pedestrian, transit rail
- ▶ Human experience/interactive
- ▶ Aging population, accessibility, and younger generation population
- ▶ Regional hub:
 - Commercial
 - Tourism
 - Recreation
 - Cultural
 - Local and entrepreneurial
- ▶ Connect to natural environment and river
- ▶ Sustainable design
- ▶ Increasing population
- ▶ Revitalizing downtown

What We Want to Keep – Treasures

- ▶ Pedestrian with cars on bridge (old bridge)
- ▶ Easy access across river
- ▶ Bridge to be a destination and interactive
- ▶ Serviceable bridge
- ▶ Historic downtown
- ▶ Bridge slows traffic into downtown
- ▶ Pedestrian mobility across river
- ▶ Wider lanes
- ▶ Viability 700 block of Grant
- ▶ Narrowness of bridge
- ▶ Better connection between Hot Springs and downtown
- ▶ Pedestrian meet – east/west side in the middle
- ▶ Historic structures
- ▶ Colors, materials of natural environment
- ▶ Bicycle accessibility
- ▶ Visual of pool going over pedestrian bridge
- ▶ Walking experience
- ▶ Harmonious relationships between bridge space underneath
- ▶ View from bridge
- ▶ Move forward of community
- ▶ Ease of access to adjacent businesses
- ▶ View of bridge on Grand
- ▶ Left turn on Grand 8th community pride in process and results
- ▶ Parking under the bridge
- ▶ Pedestrian bridge experience – north side
- ▶ Pedestrian separated from traffic
- ▶ Possibility of redevelopment at 6th street
- ▶ Rebuild a landmark
- ▶ Slow traffic – safe
- ▶ Hotel Colorado and railroad station design
- ▶ Fishing resource under bridge
- ▶ Pedestrian meeting place north end

What We Want to Leave Behind'

- ▶ Design of guardrails
- ▶ Congestion on 6th
- ▶ Stoplight on 6th
- ▶ Idling
- ▶ Safety/structural integrity
- ▶ 6th Avenue intersection poor design
- ▶ View from bridge
- ▶ Traffic noise
- ▶ Pedestrian safety issues
- ▶ Substandard laneage for sportsman
- ▶ Bottleneck at 8th Avenue
- ▶ Pigeons and droppings
- ▶ Stormwater pollution
- ▶ Creepy area under bridge south side
- ▶ Sense of unfinished
- ▶ Ugly appearance
- ▶ Bridge appearance
- ▶ Funneling traffic onto Grand Avenue
- ▶ Narrow laneage
- ▶ Dirt, etc., under bridge
- ▶ Bridge inadequacy
- ▶ High speed through town
- ▶ Piers in river and near I-70 on-ramp
- ▶ Accepting mediocrity
- ▶ Pan-handling on the north side
- ▶ Ugly appearance
- ▶ Lack of curb appeal as entering
- ▶ Entire bridge structure
- ▶ Decaying concrete
- ▶ Community dissention

Scenario: Rehabilitation

- ▶ Potential for less impact
- ▶ Maintain ½ bridge for traffic
- ▶ Meet standard
- ▶ No additional piers
- ▶ Current bridge not attractive
- ▶ Potential cost
- ▶ Potential for moving highway
- ▶ Rehab for ped/bike relocate SH 82- new bridge
- ▶ Potential for unknown issues and expenses
- ▶ Doesn't allow clear span
- ▶ Doesn't allow for elegant design solution/iconic
- ▶ Desire to accommodate ped environment on and under the bridge
- ▶ Integrate into larger community fabric
- ▶ Desire to reduce columns in river and impacting I-70 ramps
- ▶ Appearance/aesthetics
- ▶ Want to accommodate next 50 years
- ▶ Protect downtown Grand 700-800
- ▶ Enhance ped environment 700 block and under bridge
- ▶ Integrate with downtown and infrastructure
- ▶ Accommodate traffic w/ bridge that is beautiful
- ▶ If project moves forward, rehab has limitations - piers, clearance, aesthetics
- ▶ Consider three-lane configuration with reversible of signals
- ▶ No sentimental value
- ▶ Lots of pain, not much gain
- ▶ Might be done quicker
- ▶ Desire to minimize impacts to traffic
- ▶ Cost advantage possible
- ▶ Maximize life to minimize future impact
- ▶ Doesn't get pier out of the river
- ▶ Lot of pain, minimal gain
- ▶ Can't create the iconic
- ▶ Limits design opportunities
- ▶ Ped and ADA accommodation not necessarily on bridge
- ▶ Accommodate bikes on bridge

Scenario: Replacement

- ▶ Experience: Grand Avenue view favored slightly over view from I-70
- ▶ No connection to river shown
- ▶ View from I-70 important - a lot of other stuff going on from bridge
- ▶ Driving vs. walking experience over bridge - different
- ▶ All views of the bridge are important - from I-70, the pool
- ▶ What you see beyond the bridge is important
- ▶ The project is more than the bridge - includes the connection to 6th and I-70
- ▶ “Hauter plan” opens access to river, revitalizes 6th Street area
- ▶ Drive under arches on top of deck - great experience on bridge
- ▶ It’s a gateway to the valley, not just Glenwood
- ▶ Modern appearance is good, but not as acceptable to community as look of hotel
- ▶ Prefer stone over metal
- ▶ How does bridge best serve needs of City
- ▶ Alignment is important
- ▶ Get congestion off of 6th
- ▶ Accommodate pedestrians
- ▶ Allow for redevelopment
- ▶ Open access to river
- ▶ Stone that matches the pool
- ▶ Real gateway at touchdown points - the experience of driving under it
- ▶ Stone work and a hint of historic character
- ▶ Subtle use of natural colors and material is better than clean design
- ▶ Simple, beautiful, complementary materials. Viaducts in Canyon are simple, but complementary to surroundings
- ▶ Not ultramodern
- ▶ New library is good example of historic with a modern feel - renderings available
- ▶ Structure iconic and experience iconic
- ▶ Complement pool and hotel
- ▶ 8th integration and under bridge
- ▶ Thinner bridge coming down on south side
- ▶ Funding is not to drive what the bridge becomes
- ▶ Spaces on south side must be usable and inviting
- ▶ Integrate touchdown on south side with bridge
- ▶ Closing Wing St. could better address the enhancement of the plaza area on south side
- ▶ Design footbridge into new bridge -this needs to be explored
- ▶ Views: what’s most important? Both experience is important - from I-70 and Grand

Scenario: Replacement (cont.)

- ▶ Will see it from all over town; river, too
- ▶ Needs to be in harmony with the community – not necessarily “modern” or “historic”, i.e., Fire Station – “fits”
- ▶ Stone, arched scenario with steel works
- ▶ View of bridge is most important to those who are not driving over it
- ▶ View from car should be a consideration
- ▶ Want to have it look special
- ▶ Clean, simple
- ▶ Clear span
- ▶ Sydney Harbor Bridge: clean, elegant, no piers in river
- ▶ Use project to improve access to river and under space
- ▶ Incorporate elements to enhance river access
- ▶ Need something of interest on top of bridge – not bare like today
- ▶ Something festive and fun on top – gateway to Glenwood, attracting you to downtown
- ▶ Service both views – from bridge and to bridge
- ▶ Service both views with structure above and below driving platform
- ▶ Modern look is not for Glenwood
- ▶ Stone is important – don’t like cold, industrial
- ▶ Elements above and below bridge
- ▶ Fit in with arch elements of surrounding building
- ▶ Buses cause noise
- ▶ Need to minimize vehicle noise – particularly 8th, but also 6th St. areas.
- ▶ Don’t forget area between 7th and 8th Street – very important to vitality of downtown
- ▶ Like plaza idea – ties into Wing St.
- ▶ Area under 8th accessible
- ▶ Expand vertical space of place area by moving touchdown to north edge of 8th Street
- ▶ Grade-separated ped crossing at 8th St (bikes and ADA too)
- ▶ Cross under bridge, rather than at 8th
- ▶ Getting across 8th and river not obvious to peds presently – remove confusion
- ▶ Public restrooms
- ▶ Parking (more or less) and removal of Wing St. are potential opportunities
- ▶ Remove on-street parking
- ▶ Separate people walking/dining from cars – so they’re not staring at semis from 7th
- ▶ Vehicles need to see businesses
- ▶ Sound barrier – landscaping
- ▶ Buffer peds with walls

Scenario: Replacement (cont.)

- ▶ Opportunity for landscaping on bridge
- ▶ Shift angle of bridge west on north away from 6th and Pine
- ▶ Splash back/runoff from bridge, shading of bridge on buildings needs to be addressed
- ▶ Geothermal
- ▶ Air pollution
- ▶ Shoulders could add to confusion
- ▶ There is a plan to upgrade alleys in the area
- ▶ Views of bridge important from all angles
- ▶ Don't take up a lot of space
- ▶ Open, 360 views
- ▶ Don't compete with surroundings
- ▶ Should fit in with community
- ▶ Simple look
- ▶ Sound reduction - trucks downshifting
- ▶ Fits - looks historical and modern
- ▶ Mimic surrounding structures - arches don't do this
- ▶ Preserve views from bridge
- ▶ Walls on side of bridge calms traffic and reduces noise
- ▶ Should make it look good, not minimize it
- ▶ Function over form; make it look pleasing, but must function well
- ▶ Like trusses of Sydney bridge - mimics ped bridge
- ▶ Bridge should be an attraction in and of itself
- ▶ Like no columns
- ▶ Structures above good - calm traffic
- ▶ Don't be so simplistic that it's ugly
- ▶ Lighting, flags could add to the appeal of the bridge and bring the downtown look into the bridge

Scenario: Managing Construction

- ▶ Keep staging area important
 - Due to staging traffic
 - Effect on businesses
 - Timing could affect staging
 - Any closure would affect businesses (kill)
- ▶ Construction will keep people away from Glenwood
 - Keep ped access open during construction
- ▶ Reduce total time of construction
- ▶ Better Labor Day to Memorial Day (construction)
- ▶ Better construction at night - only summer
- ▶ Manage people flow
- ▶ Look at historic data for closure
- ▶ Temporary bridge due to impacts of closure
- ▶ Pick time of year with advance notice
- ▶ Closure will result in unemployment
- ▶ Use river or RR ROW to minimize staging needs somewhere else
- ▶ Carbondale 133 bridge good construction
- ▶ Consider improvements to detour routes
- ▶ Proper communication of alternative routes
- ▶ Detour traffic affects businesses - Grand and other
- ▶ Improve other improvements such as 8th St connection to reduce construction impact
- ▶ Not allow future 6 lane
- ▶ Work with City to allow concessions such as trucks on Midland
- ▶ Park 'n ride circulators
- ▶ Reuse parking restrictions
- ▶ Improved local circulation transit and ped during construction
- ▶ Move ped traffic off Grand during construction
- ▶ Good information about construction (alts./detours)
- ▶ Good public relations that Glen Springs not closed - City, Chamber, multi-faceted
- ▶ Make construction an attraction
- ▶ Message about end product
- ▶ Should consider alt. routes/detours thru residential, e.g., Blake Street
- ▶ How about Devereaux Road bridge plus ½ connection to I-70 (West) to address traffic
- ▶ Detour bridge could help local circulation & traffic flow - long term
- ▶ Minimize impacts to downtown businesses
 - Close bridge will not work too much impact

Scenario: Managing Construction (cont.)

- ▶ Too many cars kills downtown
- ▶ Month closure reasonable
 - During should season April, Oct, Nov
 - Spring/fall construction bad for fish
- ▶ If detour, consider clearance @ 7th St. Bridge/railroad
- ▶ Staging
 - Maintaining parking
- ▶ Detour bridge reduces impact
- ▶ Develop plaza S. side early to attract visitors
- ▶ Work w/ City on 7th Street
- ▶ Closing to construct could kill businesses
- ▶ Promote downtown
- ▶ Advertise alt. routes to downtown
- ▶ Create more alt. routes
 - Side streets
 - Truck routes
- ▶ Keep 7th Street open for more flexibility/circulation
- ▶ Consider construction detour bridge
- ▶ Consider multiple routes for traffic thru city & downtown
- ▶ Closure of bridge would allow people to learn other options
- ▶ Pedestrian traffic is important to keep open
- ▶ Concern that partial construction ½ / ½ is too much like existing
- ▶ Closing peds is very important to downtown businesses
- ▶ Message that downtown is still open
- ▶ Maintenance of traffic shouldn't drive bridge design

Key Project Objectives

- ▶ Minimize impacts to businesses.
- ▶ Balance duration and extent of closures for construction.
- ▶ Gateway/view from all perspectives important.
- ▶ Bridge needs to be integrated into community fabric/infrastructure.
- ▶ Incorporate human element – streetscape.
- ▶ Accommodate pedestrians and bikes.
- ▶ Harmonious with natural environment and local materials.
- ▶ Provide separated pedestrian experience.
- ▶ Minimize piers in river and impacts to I-70.
- ▶ Accommodate local and regional traffic.
- ▶ Create an attraction – Long term and during construction.
- ▶ Provide strong information/media coverage – “open for business”.
- ▶ Design to manage speed and livability and minimize noise.
- ▶ Consistent with local transportation and land use plans.
- ▶ Partner with City and Stakeholders to address impacts and explore opportunities.
- ▶ Look for opportunities to enhance areas at ends of bridge.
- ▶ Consider staging and construction traffic.
- ▶ Strive for the best design and value.